

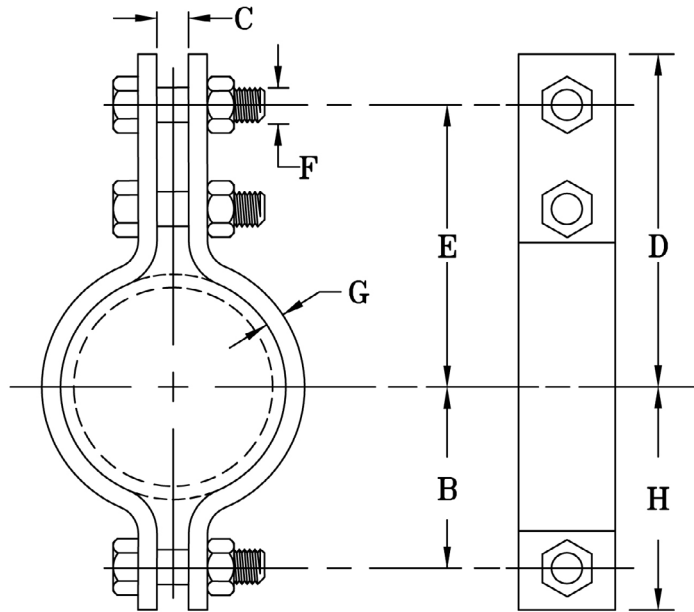


FIG. 80

HEAVY THREE-BOLT PIPE CLAMP

www.pipingtech.com/fig80

- SIZE RANGE:** 1 1/2" thru 36"
- MATERIAL:** Carbon steel
- FINISH:** Black or galvanized; furnished black unless otherwise specified.
- SERVICE:** Recommended for suspension of cold or hot pipe lines where little or no insulation is required.
- MAX. TEMP.:** 750 °F
- ORDERING:** Specify figure number, pipe size, description and finish.



SUPPORT ASSEMBLY COMPONENTS

PIPE SIZE	MAX. RECOM. LOAD (lb.)		B	C	D	E	F	G	H	APPROX. WEIGHT (lb. per each)
	@ 650 °F	@ 750 °F								
1 1/2	2,710	2,420	2 1/8	1	5 13/16	5	3/4	3/8 x 2	3 1/8	5.50
2	2,710	2,420	3	1	6 1/16	5 1/16	3/4	3/8 x 2	4	5.70
3	2,710	2,420	3 5/8	1 1/2	8	6 1/2	3/4	3/8 x 2	5 1/8	7.50
4	3,500	3,125	4 1/2	1 3/4	9	7	7/8	3/8 x 2 1/2	6 1/2	10.70
6	3,500	3,125	4 3/4	1 3/4	10 3/16	8 15/16	1	3/8 x 2 1/2	6	12.00
8	4,800	4,285	6	2	11 3/8	10 1/8	1 1/8	1/2 x 2 1/2	7 1/4	18.50
10	5,500	4,910	7 1/4	2 1/4	13 1/8	11 3/8	1 1/4	1/2 x 3 1/2	9	30.30
12	7,000	6,250	8 5/8	2 1/2	14 5/16	12 9/16	1 3/8	5/8 x 3 1/2	10 3/8	42.00
14	9,500	8,485	9 5/8	2 1/2	15 1/2	13 1/2	1 1/2	3/4 x 4	11 5/8	60.00
16	10,000	8,930	10 7/8	3	17 1/8	14 7/8	1 3/4	3/4 x 4 1/2	13 1/8	80.00
18	13,800	12,325	12 1/2	3 1/2	18 1/4	16 1/4	2	1 x 4	14 1/2	115.00
20	15,300	13,665	13 1/2	3 1/2	19 3/4	17 1/4	2	1 x 5	16	140.00
24	16,300	14,555	15 1/2	3 1/2	22 5/16	19 5/16	2	1 x 6	18 1/2	190.00
28	18,000	16,055	18 7/8	4	31 3/4	27 1/4	2 1/4	1 x 7	23 3/8	354.00
30	20,500	18,285	19 7/8	4 1/4	32 3/4	28 1/4	2 1/4	1 x 8	24 3/8	406.00
36	28,000	24,975	24 5/8	4 1/2	40 1/4	34 3/4	2 3/4	1 1/2 x 8	30 1/8	678.00