

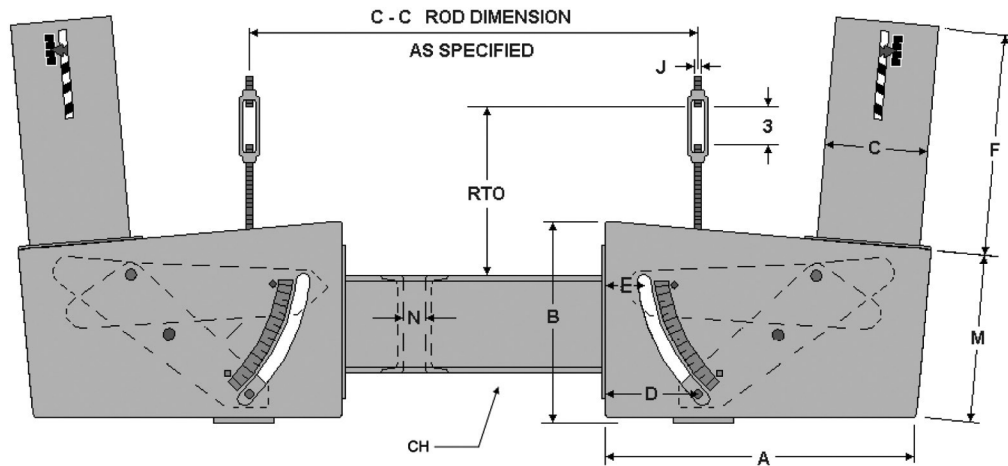


## FIG. PTP 100-G

## CONSTANT

www.pipingtech.com/ptp100-g

ENGINEERED PIPE SUPPORTS



\* Drawing shown for down travel

Figure PTP 100-G assembly consists of two inverted vertical constants attached with a channel as shown above. The constants are suspended via J-Rods from a beam. The whole assembly moves through the total travel. The load ranges in the tables below are half the total load lifted by the assembly, with the pipe line seated in the center of the C-C dimension, where each constant carries half the total load. The load each constant carries must include half of the assembly's weight as the whole assembly moves. Note that if the pipe line is not centered in the C-C dimension, then one constant in the assembly will carry a heavier load than the other. If this is the case then each constant could be a different size and the tables below might not apply. Please call for dimensions on such special designs.

**ORDERING:** Specify figure number, size, type, load, actual travel, total travel, direction of travel, and C-C dimension. For load and travel not in the tables, please call for dimensions.

**IMPORTANT NOTES:** All dimensions are in inches unless otherwise noted.

- RTO - Rod take out for down travel
- D - J-Rod position for down travel
- E - J-Rod position for up travel
- F - Maximum length for the load range
- L - See side view of PTP 100-D
- WT - Approximate weight for the load range (per side)
- CH - Size of channel

### J-Rod Selection

LOAD (lb.)	0	766	1492	2403	3869	5664	9122	13355	17776	23660	28628	38104	46105
	765	1491	2402	3868	5663	9121	13354	17775	23659	28627	38103	46104	60000
J-ROD	1/2	5/8	3/4	1	1 1/4	1 1/2	1 3/4	2	2 1/4	2 1/2	2 3/4	3	3 1/4

### Total Travel 1 1/2 to 4 inches

LOAD RANGE (lb.)	J-ROD	RTO*	A	B	C	D	E	F	L	M	N	CH (lb./ft)	WT (lb.)
44 - 243	1/2	7 5/8	16 3/8	9 11/16	6 5/8	3 3/4	2	12	7 5/8	8	1	3 x 4.1	80
244 - 1018	1/2	6 7/8	17 3/8	10 1/8	8 5/8	3 3/4	2	15	11 5/8	8 3/8	1	4 x 5.4	130
	5/8	6 7/8											
1019 - 3516	5/8	5 1/2	17 3/8	11 1/8	8 5/8	3 3/4	2	22	11 5/8	9 1/4	1 1/4	6 x 10.5	265
	3/4	5 1/2											
	1	7 1/2											

\*Rod Take Out (RTO) is for down travel [ Add 4 inches for up travel ]

CONSTANTS\_100.XLS-04/22/17



## FIG. PTP 100-G

## CONSTANT

ENGINEERED PIPE SUPPORTS

[www.pipingtech.com/ptp100-g](http://www.pipingtech.com/ptp100-g)

### Total Travel 1 1/2 to 4 inches

LOAD RANGE (lb.)	J-ROD	RTO*	A	B	C	D	E	F	L	M	N	CH (lb./ft)	WT (lb.)
3517 - 7538	1	5 3/8	20 3/8	12 1/2	8 5/8	4 5/16	2 9/16	33	11 5/8	10 1/8	1 1/2	10 x 15.3	460
	1 1/4	6 3/8											
	1 1/2	6 5/8											
7539 - 16159	1 1/2	5 1/8	23 9/16	15 3/8	12 3/4	5 9/16	3 7/8	44	18 3/8	12 5/8	2 1/8	12 x 20.7	1,135
	1 3/4	6 5/8											
	2	10 5/8											
16160 - 31490	2	9 1/2	24 1/4	18 15/16	12 3/4	6 3/4	5	58	18 3/8	16 1/16	2 7/8	15 x 33.9	1,840
	2 1/4	11 1/2											
	2 1/2	11 1/2											
	2 3/4	13 1/2											

\*Rod Take Out (RTO) is for down travel [ Add 4 inches for up travel ]

CONSTANTS\_100.XLS-04/22/17

### Total Travel 4 1/2 to 6 inches

LOAD RANGE (lb.)	J-ROD	RTO*	A	B	C	D	E	F	L	M	N	CH (lb./ft)	WT (lb.)
34 - 183	1/2	6 7/16	18 11/16	12	6 5/8	4 1/2	1 7/8	12	7 5/8	10 1/16	1	3 x 4.1	95
184 - 765	1/2	5 11/16	19 11/16	12 1/2	8 5/8	4 1/2	1 7/8	15	11 5/8	10 1/2	1	4 x 5.4	140
766 - 2402	5/8	4 1/4	19 11/16	13 5/8	8 5/8	4 1/2	1 7/8	22	11 5/8	11 1/2	1 1/4	6 x 10.5	275
	3/4	4 1/4											
2403 - 5663	1	4 1/8	22 13/16	15	8 5/8	5 1/4	2 5/8	33	11 5/8	12 7/16	1 1/2	10 x 15.3	470
	1 1/4	5 1/8											
5664 - 12140	1 1/2	3 5/8	25 1/4	17 5/16	12 3/4	5 3/4	3 1/8	44	18 3/8	14 7/16	2 1/8	12 x 20.7	1,130
	1 3/4	5 1/8											
12141 - 23659	1 3/4	4 1/16	26 5/8	20 7/8	12 3/4	7 1/4	4 5/8	58	18 3/8	17 7/8	2 7/8	15 x 33.9	1,775
	2	8 1/16											
	2 1/4	10 1/16											

\*Rod Take Out (RTO) is for down travel [ Add 6 inches for up travel ]

CONSTANTS\_100.XLS-04/22/17

### Total Travel 6 1/2 to 8 inches

LOAD RANGE (lb.)	J-ROD	RTO*	A	B	C	D	E	F	L	M	N	CH (lb./ft)	WT (lb.)
25 - 151	1/2	9 3/16	21 1/4	14 1/2	6 5/8	5 9/16	2	12	7 5/8	12 5/16	1	3 x 4.1	105
152 - 632	1/2	8 7/16	22 1/4	15	8 5/8	5 9/16	2	15	11 5/8	12 3/4	1	4 x 5.4	155
633 - 1985	1/2	7 1/16	22 1/4	16	8 5/8	5 9/16	2	22	11 5/8	13 5/8	1 1/4	6 x 10.5	300
	5/8	7 1/16											
	3/4	7 1/16											
1986 - 4680	3/4	5 3/16	25 1/8	16 7/8	8 5/8	6 1/16	2 1/2	33	11 5/8	14 1/8	1 1/2	10 x 15.3	490
	1	7 1/16											
4681 - 10033	1 1/4	6 1/8	27 13/16	19 15/16	12 3/4	6 13/16	3 1/4	44	18 3/8	16 13/16	2 1/8	12 x 20.7	1,180
	1 1/2	6 3/8											
	1 3/4	7 7/8											
10034 - 19552	1 3/4	6 3/8	30 3/16	23 7/16	12 3/4	9 5/16	5 3/4	58	18 3/8	20 1/8	2 7/8	15 x 33.9	1,830
	2	10 3/8											
	2 1/4	12 3/8											

\*Rod Take Out (RTO) is for down travel [ Add 8 inches for up travel ]

CONSTANTS\_100.XLS-04/22/17



## FIG. PTP 100-G

## CONSTANT

[www.pipingtech.com/ptp100-g](http://www.pipingtech.com/ptp100-g)

### Total Travel 8 1/2 to 10 inches

LOAD RANGE (lb.)	J-ROD	RTO*	A	B	C	D	E	F	L	M	N	CH (lb./ft)	WT (lb.)
21 - 125	1/2	10 3/16	23 3/4	16 5/8	6 5/8	6 5/8	2 1/8	12	7 5/8	14 1/4	1	3 x 4.1	120
126 - 522	1/2	9 1/2	24 13/16	16 7/8	8 5/8	6 5/8	2 1/8	15	11 5/8	14 3/8	1	4 x 5.4	165
523 - 1640	1/2	8 1/16	24 3/4	18	8 5/8	6 5/8	2 1/8	22	11 5/8	15 3/8	1 1/4	6 x 10.5	320
	5/8	8 1/16											
	3/4	8 1/16											
1641 - 3868	3/4	5 13/16	27 1/4	18 3/4	8 5/8	6 7/8	2 3/8	33	11 5/8	15 3/4	1 1/2	10 x 15.3	500
	1	7 13/16											
3869 - 8292	1 1/4	6 13/16	29 7/8	21 3/4	12 3/4	7 3/8	2 7/8	44	18 3/8	18 3/8	2 1/8	12 x 20.7	1,210
	1 1/2	7 1/16											
8293 - 16159	1 1/2	5 5/16	31 1/16	23 15/16	12 3/4	8 5/8	4 1/8	58	18 3/8	20 1/2	2 7/8	15 x 33.9	1,825
	1 3/4	6 13/16											
	2	10 13/16											

\*Rod Take Out (RTO) is for down travel [ Add 10 inches for up travel ]

CONSTANTS\_100.XLS-04/22/17

### Total Travel 10 1/2 to 12 inches

LOAD RANGE (lb.)	J-ROD	RTO*	A	B	C	D	E	F	L	M	N	CH (lb./ft)	WT (lb.)
17 - 103	1/2	10 15/16	26 3/8	19	6 5/8	7 5/8	2 1/4	12	7 5/8	16 3/8	1	3 x 4.1	135
104 - 432	1/2	10 1/8	27 3/8	19 1/2	8 5/8	7 5/8	2 1/4	15	11 5/8	16 3/4	1	4 x 5.4	185
433 - 1491	1/2	8 15/16	27 3/8	20 1/8	8 5/8	7 5/8	2 1/4	22	11 5/8	17 5/16	1 1/4	6 x 10.5	345
	5/8	8 15/16											
1492 - 3197	3/4	6 5/8	29 3/4	21	8 5/8	7 5/8	2 1/4	33	11 5/8	17 13/16	1 1/2	10 x 15.3	540
	1	8 5/8											
3198 - 6853	1	6 11/16	32 1/2	23 7/8	12 3/4	8 3/8	3	44	18 3/8	20 5/16	2 1/8	12 x 20.7	1,265
	1 1/4	7 11/16											
	1 1/2	7 15/16											
6854 - 13354	1 1/2	6 3/16	33 5/8	26 1/8	12 3/4	9 5/8	4 1/4	58	18 3/8	22 1/2	2 7/8	15 x 33.9	1,855
	1 3/4	7 11/16											

\*Rod Take Out (RTO) is for down travel [ Add 12 inches for up travel ]

CONSTANTS\_100.XLS-04/22/17

### Total Travel 12 1/2 to 14 inches

LOAD RANGE (lb.)	J-ROD	RTO*	A	B	C	D	E	F	L	M	N	CH (lb./ft)	WT (lb.)
17 - 94	1/2	11 15/16	28 5/8	20 15/16	6 5/8	8 1/2	2 1/8	12	7 5/8	18 1/8	1	3 x 4.1	150
95 - 392	1/2	11 3/16	29 11/16	21 1/2	8 5/8	8 1/2	2 1/8	15	11 5/8	18 5/8	1	4 x 5.4	200
393 - 1232	1/2	9 11/16	29 11/16	22 11/16	8 5/8	8 1/2	2 1/8	22	11 5/8	19 5/8	1 1/4	6 x 10.5	375
	5/8	9 11/16											
1233 - 2906	5/8	7 11/16	32 5/16	23	8 5/8	8 3/4	2 3/8	33	11 5/8	19 9/16	1 1/2	10 x 15.3	580
	3/4	7 11/16											
	1	9 11/16											
2907 - 6230	1	7 5/8	34 3/4	26 1/16	12 3/4	9 1/4	2 7/8	44	18 3/8	22 5/16	2 1/8	12 x 20.7	1,320
	1 1/4	8 5/8											
	1 1/2	8 7/8											
6231 - 12140	1 1/2	6 15/16	35 1/2	27 13/16	12 3/4	10	3 5/8	58	18 3/8	24	2 7/8	15 x 33.9	1,900
	1 3/4	8 7/16											

\*Rod Take Out (RTO) is for down travel [ Add 14 inches for up travel ]

CONSTANTS\_100.XLS-04/22/17

ENGINEERED PIPE SUPPORTS