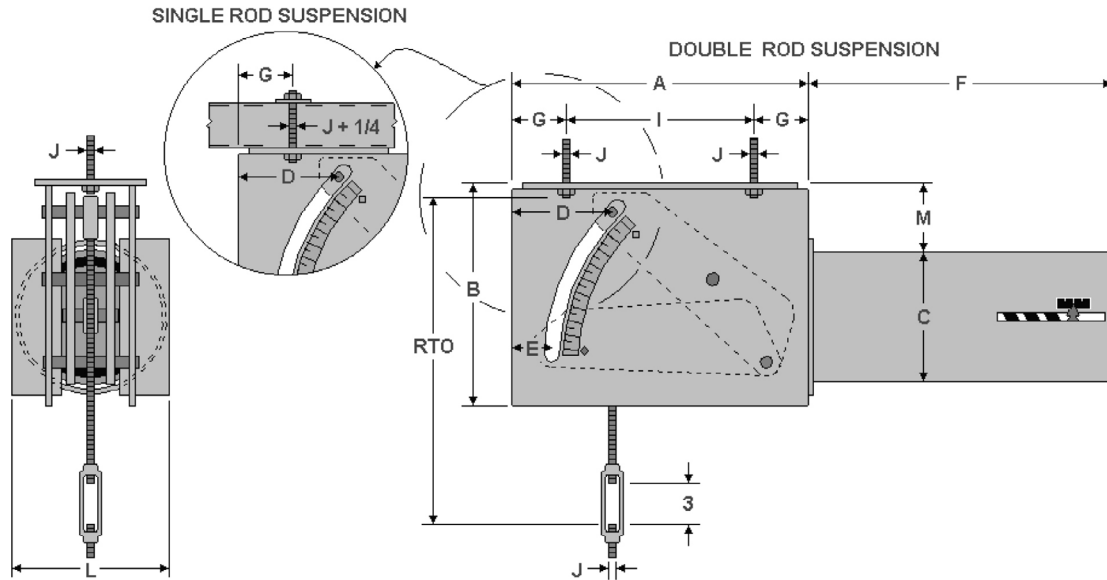




FIG. PTP 200-A

CONSTANT

www.pipingtech.com/ptp200-a



* Drawing shown for down travel

Figure PTP 200-A is a horizontal constant suspended from a beam. It can be furnished either with single rod suspension or double rod suspension as shown above. The single rod suspension must be mounted flush to the bottom of the beam where the suspension rod is 1/4 inch thicker than J-Rod. Note that the rod take out (RTO) for the single rod suspension must be adjusted by subtracting 1/4 inch from the values given in the tables below.

ORDERING: Specify figure number, size, type, load, actual travel, total travel and direction of travel. For load and travel not in the tables, please call for dimensions.

IMPORTANT NOTES:

All dimensions are in inches unless otherwise noted.

- RTO - Rod take out for down travel
- D - J-Rod position for down travel
- E - J-Rod position for up travel
- F - Maximum length for the load range
- M - Maximum height for the load range
- WT - Maximum weight for the load range

J-Rod Selection

LOAD (lb.)	0	766	1492	2403	3869	5664	9122	13355	17776	23660	28628	38104	46105
	765	1491	2402	3868	5663	9121	13354	17775	23659	28627	38103	46104	60000
J-ROD	1/2	5/8	3/4	1	1 1/4	1 1/2	1 3/4	2	2 1/4	2 1/2	2 3/4	3	3 1/4

SUBTRACT 1/4" OF THE ROD TAKE OUT (RTO) FOR SINGLE ROD SUSPENSION ONLY FROM THE TABLES BELOW

Total Travel 1 1/2 to 4 inches

LOAD RANGE (lb.)	J-ROD	RTO*	A	B	C	D	E	F	G	I	L	M	WT (lb.)
44 - 243	1/2	14	12 1/2	8 3/4	6 5/8	3 7/8	2 5/16	12	1 7/8	8 3/4	7 5/8	1 1/4	60
244 - 1018	1/2	15	13 1/2	11	8 5/8	4 3/8	2 13/16	15	2 3/8	8 3/4	11 5/8	1 1/4	105
	5/8	14 7/8											
1019 - 3516	5/8	14 7/8	14	11 1/8	8 5/8	4 3/8	2 13/16	22	2 3/8	9 1/4	11 5/8	1 3/8	215
	3/4	14 3/4											
	1	16 1/2											

*Rod Take Out (RTO) is for down travel [Add 4 inches for up travel]

CONSTANTS_200.XLS-04/22/17



FIG. PTP 200-A

CONSTANT

ENGINEERED PIPE SUPPORTS

www.pipingtech.com/ptp200-a

Total Travel 1 1/2 to 4 inches

LOAD RANGE (lb.)	J-ROD	RTO*	A	B	C	D	E	F	G	I	L	M	WT (lb.)
3517 - 7538	1	18 15/16	15 3/4	13 1/4	8 5/8	5 7/8	4 1/4	33	3 1/2	8 3/4	11 5/8	1 1/2	380
	1 1/4	19 11/16											
	1 1/2	19 11/16											
7539 - 16159	1 1/2	21 5/8	19 3/4	16 7/8	12 3/4	7 5/8	6 1/16	44	4 3/8	11	18 3/8	1 1/2	1,035
	1 3/4	22 7/8											
	2	26 5/8											
16160 - 31490	2	28 5/8	23 3/4	19 7/8	12 3/4	10 3/8	8 13/16	58	6 1/2	10 3/4	18 3/8	3 1/2	1,705
	2 1/4	30 3/8											
	2 1/2	30 1/8											
	2 3/4	31 7/8											

*Rod Take Out (RTO) is for down travel [Add 4 inches for up travel]

CONSTANTS_200.XLS-04/22/17

Total Travel 4 1/2 to 6 inches

LOAD RANGE (lb.)	J-ROD	RTO*	A	B	C	D	E	F	G	I	L	M	WT (lb.)
34 - 183	1/2	13 5/16	15 1/4	10 1/4	6 5/8	4 3/8	2	12	2	11 1/4	7 5/8	2 11/16	65
184 - 765	1/2	13 13/16	16 3/4	11 3/4	8 5/8	5 1/8	2 3/4	15	2 3/4	11 1/4	11 5/8	2 3/16	110
766 - 2402	5/8	13 3/16	16 1/2	11 3/8	8 5/8	4 3/8	2	22	2	12 1/2	11 5/8	1 13/16	215
	3/4	13 1/16											
2403 - 5663	1	16 7/8	18	13 1/4	8 5/8	5 7/8	3 1/2	33	3 1/4	11 1/2	11 5/8	1 1/2	365
	1 1/4	17 5/8											
5664 - 12140	1 1/2	19 9/16	21 3/4	16 7/8	12 3/4	7 3/8	5	44	3 3/4	14 1/4	18 3/8	1 1/2	1,015
	1 3/4	20 13/16											
12141 - 23659	1 3/4	23 5/8	26	20 5/8	12 3/4	10 5/16	7 15/16	58	6 5/8	12 3/4	18 3/8	4 5/16	1,640
	2	27 3/8											
	2 1/4	29 1/8											

*Rod Take Out (RTO) is for down travel [Add 6 inches for up travel]

CONSTANTS_200.XLS-04/22/17

Total Travel 6 1/2 to 8 inches

LOAD RANGE (lb.)	J-ROD	RTO*	A	B	C	D	E	F	G	I	L	M	WT (lb.)
25 - 151	1/2	13 5/16	18	12 1/4	6 5/8	5 1/8	1 7/8	12	2 1/4	13 1/2	7 5/8	4 5/8	75
152 - 632	1/2	13 5/16	18 1/2	13 1/4	8 5/8	5 1/8	1 7/8	15	2 1/4	14	11 5/8	3 5/8	120
633 - 1985	1/2	13 3/8	19 1/2	13 3/8	8 5/8	5 1/8	1 7/8	22	2 1/4	15	11 5/8	3 13/16	235
	5/8	13 1/4											
	3/4	13 1/8											
1986 - 4680	3/4	13 9/16	20 3/4	14	8 5/8	5 7/8	2 5/8	33	3	14 3/4	11 5/8	1 15/16	390
	1	15 5/16											
	1 1/4	16 1/16											
4681 - 10033	1 1/4	17 1/2	23 3/4	16 7/8	12 3/4	7 1/8	3 7/8	44	3 1/2	16 3/4	18 3/8	1 1/2	1,030
	1 1/2	17 1/2											
	1 3/4	18 3/4											
10034 - 19552	1 3/4	19 1/2	26 3/4	18 5/8	12 3/4	8 7/8	5 5/8	58	4 3/4	17 1/4	18 3/8	2 1/4	1,610
	2	23 1/4											
	2 1/4	25											

*Rod Take Out (RTO) is for down travel [Add 8 inches for up travel]

CONSTANTS_200.XLS-04/22/17



FIG. PTP 200-A

CONSTANT

www.pipingtech.com/ptp200-a

ENGINEERED PIPE SUPPORTS

Total Travel 8 1/2 to 10 inches

LOAD RANGE (lb.)	J-ROD	RTO*	A	B	C	D	E	F	G	I	L	M	WT (lb.)
21 - 125	1/2	15 5/16	21	14 1/4	6 5/8	6 1/16	2 1/16	12	2 3/4	15 1/2	7 5/8	6 5/8	90
126 - 522	1/2	15 5/16	21 1/2	15 1/4	8 5/8	6 1/16	2 1/16	15	2 3/4	16	11 5/8	5 5/8	130
523 - 1640	1/2	15 3/8	22 1/2	15 3/8	8 5/8	6 1/16	2 1/16	22	2 3/4	17	11 5/8	5 13/16	255
	5/8	15 1/4											
	3/4	15 1/8											
1641 - 3868	3/4	15 9/16	23 3/4	16	8 5/8	6 13/16	2 13/16	33	3 1/2	16 3/4	11 5/8	4	405
	1	17 5/16											
3869 - 8292	1 1/4	18 1/2	26 1/4	17 7/8	12 3/4	7 9/16	3 9/16	44	3 1/2	19 1/4	18 3/8	2 1/2	1,050
	1 1/2	18 1/2											
8293 - 16159	1 1/2	20 1/4	30	20 3/8	12 3/4	9 13/16	5 13/16	58	5 1/4	19 1/2	18 3/8	4 1/4	1,650
	1 3/4	21 1/2											
	2	25 1/4											

*Rod Take Out (RTO) is for down travel [Add 10 inches for up travel]

CONSTANTS_200.XLS-04/22/17

Total Travel 10 1/2 to 12 inches

LOAD RANGE (lb.)	J-ROD	RTO*	A	B	C	D	E	F	G	I	L	M	WT (lb.)
17 - 103	1/2	17 5/16	24 1/2	16 1/4	6 5/8	7	2 1/8	12	3 1/4	18	7 5/8	8 5/8	105
104 - 432	1/2	17 5/16	24 1/2	17 1/4	8 5/8	6 15/16	2 1/16	15	3 1/4	18	11 5/8	7 5/8	150
433 - 1491	1/2	17 5/16	25	17 3/8	8 5/8	6 13/16	2	22	3 1/8	18 3/4	11 5/8	7 3/4	280
	5/8	17 3/16											
1492 - 3197	3/4	17 1/8	25 3/4	17 1/4	8 5/8	7 1/16	2 1/4	33	3 3/8	19	11 5/8	5 9/16	420
	1	18 7/8											
3198 - 6853	1	19 5/16	28 1/2	19 3/8	12 3/4	7 9/16	2 3/4	44	3 5/8	21 1/4	18 3/8	4 1/16	1,090
	1 1/4	20 1/16											
	1 1/2	20 1/16											
6854 - 13354	1 1/2	20 1/2	30	20 7/8	12 3/4	8 1/16	3 1/4	58	3 1/4	23 1/2	18 3/8	4 1/2	1,610
	1 3/4	21 3/4											

*Rod Take Out (RTO) is for down travel [Add 12 inches for up travel]

CONSTANTS_200.XLS-04/22/17

Total Travel 12 1/2 to 14 inches

LOAD RANGE (lb.)	J-ROD	RTO*	A	B	C	D	E	F	G	I	L	M	WT (lb.)
17 - 94	1/2	19 5/16	27	18 1/4	6 5/8	7 13/16	2 1/8	12	3 3/4	19 1/2	7 5/8	10 11/16	120
95 - 392	1/2	19 5/16	27 1/2	19 1/4	8 5/8	7 7/8	2 1/4	15	3 3/4	20	11 5/8	9 11/16	165
393 - 1232	1/2	19 5/16	28 1/4	19 3/8	8 5/8	7 13/16	2 1/8	22	3 3/4	20 3/4	11 5/8	9 13/16	310
	5/8	19 3/16											
1233 - 2906	5/8	19 1/4	28 3/4	19 1/2	8 5/8	7 13/16	2 1/8	33	3 3/4	21 1/4	11 5/8	7 9/16	470
	3/4	19 1/8											
	1	20 7/8											
2907 - 6230	1	21 5/16	31 3/4	21 5/8	12 3/4	8 9/16	2 7/8	44	4 1/4	23 1/4	18 3/8	6 1/16	1,155
	1 1/4	22 1/16											
	1 1/2	22 1/16											
6231 - 12140	1 1/2	22 1/2	31	21 1/8	12 3/4	9 1/16	3 3/8	58	3 3/4	23 1/2	18 3/8	6 1/2	1,615
	1 3/4	23 3/4											

*Rod Take Out (RTO) is for down travel [Add 14 inches for up travel]

CONSTANTS_200.XLS-04/22/17