



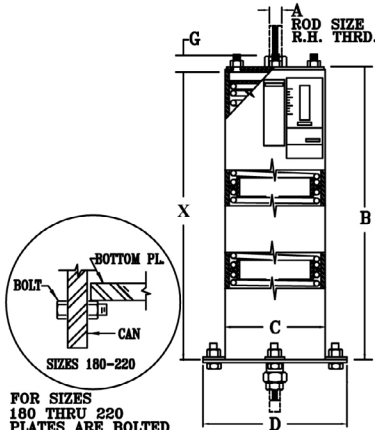
FIG. PTP-6

TRIPLE VARIABLE SPRINGS

ENGINEERED SPRING SUPPORTS

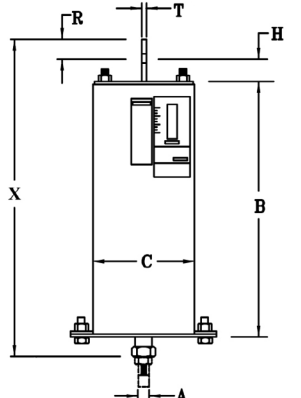
www.pipingtech.com/ptp6-abc

TYPE A



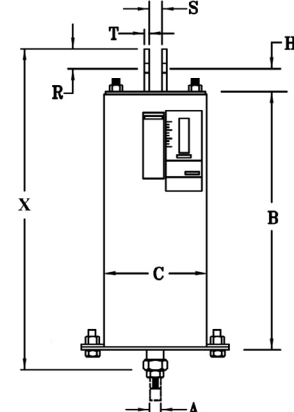
FOR SIZES 180 THRU 220 PLATES ARE BOLTED FROM THE SIDE

TYPE B



ROD NOT FURNISHED. LTH. OF R.H. THD. (SEE TABLE BELOW)

TYPE C



ROD NOT FURNISHED. LTH. OF R.H. THD. (SEE TABLE BELOW)

ORDERING: Specify figure number, size, type, description, type, operating load and calculated amount and direction of pipe movement from installed to operating position. Please specify any non-standard requirements, i.e. internally guided load column, jacking bolt, lifting lugs, etc.

GENERAL DIMENSIONS FOR FIG. PTP-6				TYPE A			TYPES B & C								TYPES A, B & C	
HANGER SIZE	ROD SIZE	CASING DIA.	BOTT. PLATE DIA.	CASING LENGTH	LOADED LENGTH X		CASING LENGTH	LUG HOLE SIZE	HEIGHT OF PIN	R	CLEVIS OPENING	THICKNESS	LOADED LENGTH X		APPROX. WEIGHT OF EACH	
	A	C	D		B	MIN.							MAX.	B		E
00	1/2	4	6 1/8	19 1/2	19 1/2	27	19 1/2	11/16	1 1/2	1 1/4	7/8	1/4	22 1/4	29 3/4	17	
10	1/2	4	6 1/8	22 1/8	23 1/8	30 5/8	22 1/8	11/16	1 1/2	1 1/4	7/8	1/4	25 7/8	33 3/8	20	
20	1/2	4	6 1/8	24 3/8	25 3/8	32 7/8	24 3/8	11/16	1 1/2	1 1/4	7/8	1/4	28 1/8	35 5/8	23	
30	1/2	5 9/16	7 5/8	21 5/8	22 5/8	30 1/8	21 5/8	11/16	1 1/2	1 1/4	7/8	1/4	25 3/8	32 7/8	30	
40	1/2	5 9/16	7 5/8	23 1/4	24 1/4	31 3/4	23 1/4	11/16	1 1/2	1 1/4	7/8	1/4	27	34 1/2	35	
50	1/2	5 9/16	7 5/8	25 1/2	26 1/2	34	25 1/2	11/16	1 1/2	1 1/4	7/8	1/4	29 1/4	36 3/4	38	
60	5/8	6 5/8	8 7/8	25 1/8	26 1/4	33 3/4	25 1/8	13/16	1 1/2	1 1/4	1 1/16	1/4	29	36 1/2	57	
70	5/8	6 5/8	8 7/8	27 7/8	29 1/8	36 5/8	27 7/8	13/16	1 1/2	1 1/4	1 1/16	1/4	31 7/8	39 3/8	69	
80	5/8	6 5/8	8 7/8	29 3/8	30 5/8	38 1/8	29 3/8	13/16	1 1/2	1 1/4	1 1/16	1/4	33 3/8	40 7/8	87	
90	3/4	8 5/8	11 5/8	29 3/16	30 5/16	37 13/16	29 3/16	15/16	1 1/2	1 1/4	1 1/4	3/8	33 1/16	40 9/16	131	
100	3/4	8 5/8	11 5/8	32 3/4	33 7/8	41 3/8	32 3/4	15/16	1 1/2	1 1/4	1 1/4	3/8	36 5/8	44 1/8	156	
110	3/4	8 5/8	11 5/8	26 3/16	27 13/16	35 5/16	26 3/16	15/16	1 1/2	1 1/4	1 1/4	3/8	30 9/16	38 1/16	132	
120	1	8 5/8	11 5/8	28 3/8	30 5/16	37 13/16	28 3/8	1 1/4	2	1 1/2	1 5/8	1/2	33 13/16	41 5/16	147	
130	1	8 5/8	11 5/8	35 7/8	37 1/8	44 5/8	35 7/8	1 1/4	2	1 1/2	1 5/8	1/2	40 5/8	48 1/8	201	
140	1 1/4	8 5/8	11 5/8	36 3/4	38 1/4	45 3/4	36 3/4	1 1/2	3	2	2	5/8	43 1/4	50 3/4	215	
150	1 1/4	8 5/8	11 5/8	36 3/4	39 5/16	46 13/16	36 3/4	1 1/2	3	2	2	5/8	44 5/16	51 13/16	237	
160	1 1/2	8 5/8	11 5/8	43 5/8	46 11/16	54 3/16	43 5/8	1 3/4	3	2 1/2	2 3/8	3/4	52 3/16	59 11/16	306	
170	1 3/4	8 5/8	11 5/8	50	53 15/16	61 7/16	50	2	3	2 1/2	2 3/8	3/4	59 7/16	66 15/16	389	
180	2	12 3/4	N/A	50 1/4	52 15/16	60 7/16	50 1/4	2 3/8	4	3	2 7/8	3/4	59 15/16	67 7/16	723	
190	2 1/4	12 3/4	N/A	57	59 15/16	67 7/16	57	2 5/8	4 1/2	3	3 1/8	3/4	67 7/16	74 15/16	855	
200	2 1/2	12 3/4	N/A	67 3/8	70 3/16	77 11/16	67 3/8	2 7/8	4 1/2	4	3 1/4	1	78 11/16	86 3/16	1,158	
210	2 3/4	12 3/4	N/A	73 7/8	77 7/16	84 15/16	73 7/8	3 1/8	4 1/2	4	3 5/8	1	85 15/16	93 7/16	1,365	
220	3	12 3/4	N/A	92 1/8	95 15/16	103 7/16	92 1/8	3 3/8	5	4	3 7/8	1	104 15/16	112 7/16	1,815	

SPRING.XLS-09/02/11