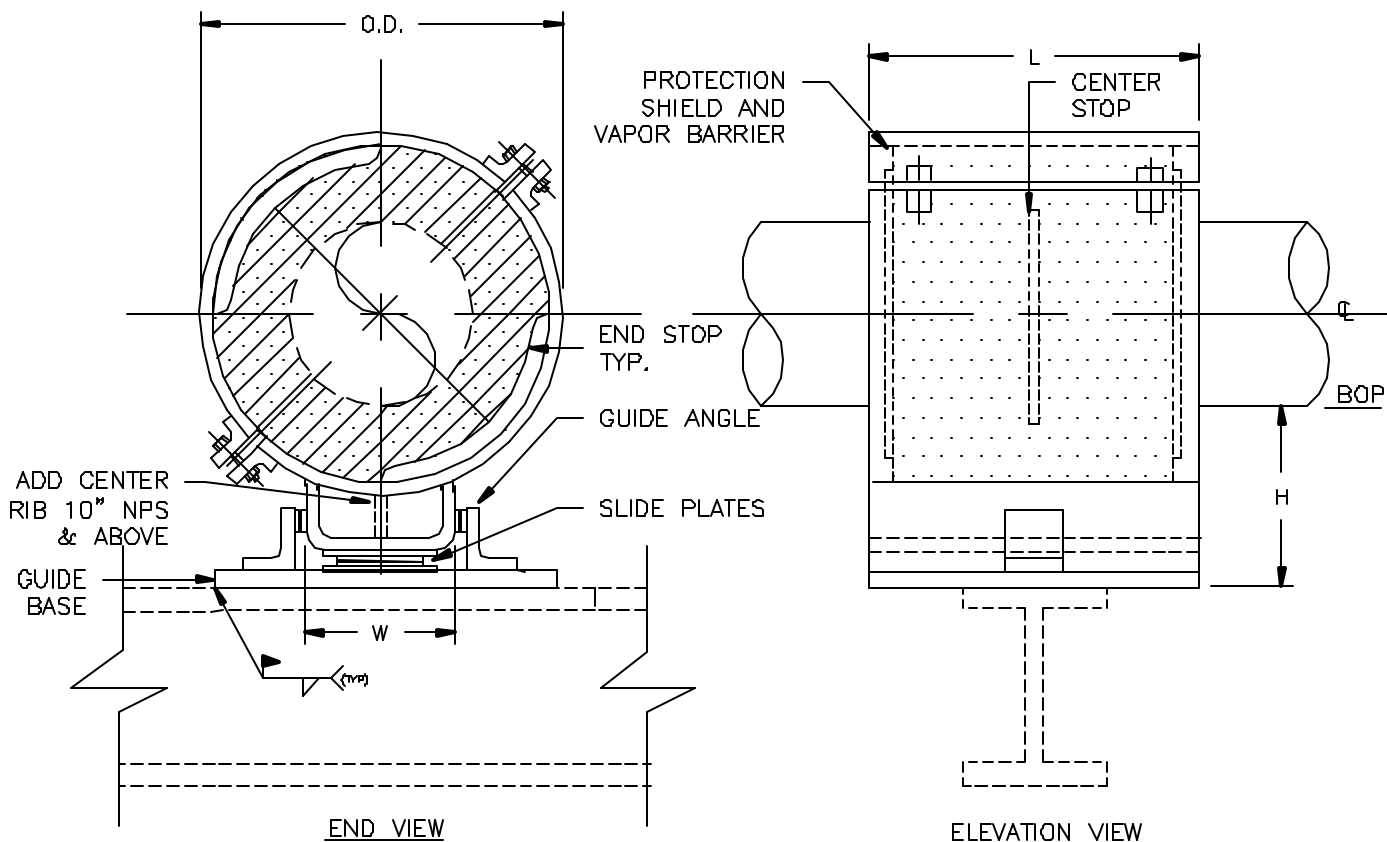


SPECIFICATIONS

INSULATION THK: _____
 SHOE LENGTH: _____
 LOADS: VERTICAL _____
 LATERAL _____
 AXIAL _____
 MOVEMENT: LATER. _____
 AXIAL _____
 TEMPERATURE: _____



Design: PT&P 6/2/1999 10:44 AM HS-3020

NOTES

	FIGURE#: HS-3020 DESCRIPTION: SLIDING SHOES, U-TYPE BASE, GUIDED, WITH THRUST PLATES
FUNCTION: USE TO SUPPORT VERTICAL LOADS LATERAL MOVEMENT LIMITED BY GUIDES. MOVEMENT OF PIPE INSIDE THE HOTSHOE LIMITED BY CENTER STOP AND END STOPS. SHOE ALLOWED TO SLIDE IN THE AXIAL DIRECTION. - -	CLIENT NAME: _____ PROJECT NAME: _____ REQUISITION#: _____ P O #: _____ DWG#: _____ MARK#: _____ PT&P JOB#: _____ ITEM#: _____ DATE: _____
PIPE SIZE: 8" TO 20" NPS.	
MATERIAL: GALVANIZED OR HDG CARBON STEEL	
INSULATION: HIGH DENSITY CALCIUM SILICATE	
TEMP. RANGE: AMBIENT TO 1200°F	
LAYERING SY.: SEE LAYERING CHARTS	
SHOE LTH.(L): STANDARD SHOE AVAILABLE IN 12" & 18" LENGTHS	
TO ORDER: SPECIFY PIPE SIZE, INSULATION THK., LENGTH HENCE: (HS-3020)-NPS-THK.-L	
LOADS: ALL LOADS ON ADJACENT CHART HAVE A SAFETY FACTOR OF 5	

PIPING TECHNOLOGY & PRODUCTS, INC.

P.O. BOX 34506 HOUSTON TEXAS 77234
 3701 HOLMES RD. HOUSTON TEXAS 77051
 TELE#:(713)731-0030 FAX#:(713)731-8640
<http://www.pipingtech.com/> E-MAIL: info@pipingtech.com





Calcium Silicate Forms used to make Hotshoes

Pipe size	L=12" Vertical Load(lbs)	L=18" Vertical Load(lbs)	Insulation Thickness											
			1"			1-1/2"			2"			2-1/2"		
			W	O.D.	H	W	O.D.	H	W	O.D.	H	W	O.D.	H
8"	715	1430	6-1/2"	11-1/2"	4"	7"	12-1/2"	4"	7-1/2"	13-1/2"	4"	8-1/8"	14-3/4"	6"
10"	1782	1782	7-1/2"	13-1/2"	4"	8-1/8"	14-3/4"	4"	8-5/8"	15-3/4"	4"	9-1/8"	16-3/4"	6"
12"	2114	2114	8-1/2"	13-15/16"	4"	9-1/8"	16-3/4"	4"	9-5/8"	17-3/4"	4"	10-1/8"	18-3/4"	6"
14"	2321	2321	9-1/2"	17"	4"	10"	18"	4"	10-1/2"	19"	4"	11"	20"	6"
16"	2653	2653	10-1/2"	19"	4"	11"	20"	4"	11-1/2"	21"	6"	12"	22"	6"
18"	2984	2984	11-1/2"	21"	4"	12"	22"	4"	12-1/2"	23"	6"	13"	24"	6"
20"	3316	3316	12-1/2"	23"	4"	13"	24"	4"	13-1/2"	25"	6"	14"	26"	6"

Pipe size	L=12" Vertical Load(lbs)	L=18" Vertical Load(lbs)	Insulation Thickness								
			3"			3-1/2"			4"		
			W	O.D.	H	W	O.D.	H	W	O.D.	H
8"	715	1430	8-5/8"	15-3/4"	6"	9-1/8"	16-3/4"	6"	9-5/8"	17-3/4"	6"
10"	1782	1782	9-5/8"	17-3/4"	6"	10-1/8"	18-3/4"	6"	10-5/8"	19-3/4"	6"
12"	2114	2114	10-5/8"	19-3/4"	6"	11-1/8"	20-3/4"	6"	11-5/8"	21-3/4"	6"
14"	2321	2321	11-1/2"	21"	6"	12"	22"	6"	12-1/2"	23"	6"
16"	2653	2653	12-1/2"	23"	6"	13"	24"	6"	13-1/2"	25"	8"
18"	2984	2984	13-1/2"	25"	6"	14"	26"	6"	14-1/2"	27"	8"
20"	3316	3316	14-1/2"	27"	6"	15"	28"	6"	15-1/2"	29"	8"