



FIG. 20

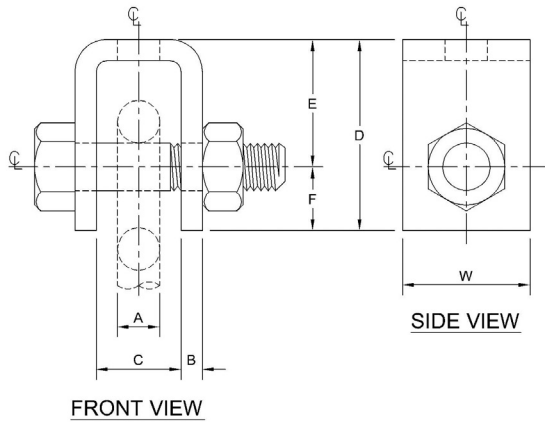
WELDED BEAM ATTACHMENT

www.pipingtech.com/fig20

MATERIAL: Carbon steel

ORDERING: Specify figure number, rod size, description and finish.

Steel attachment for welding to bottom flange or structural members which will accommodate eye rods or lug attachments. This unit permits rod swing, thereby making it suitable for pipes with horizontal movement.



NOTE: For rod sizes 1 1/8" and above, pins are used in lieu of bolts.

SIZE NO.	ROD SIZE	MAX. RECOM. LOAD (lb.)	B	C	D	E	F	W	BOLT/PIN SIZE	WEIGHT (lb. per 100)
	A									
3	3/8	730	1/4	1 1/4	2 7/8	2	7/8	2	1/2 x 2 1/2	121
4	1/2	1,350	1/4	1 1/4	2 7/8	2	7/8	2	5/8 x 2 1/2	130
5	5/8	2,160	1/4	1 1/4	2 7/8	2	7/8	2	3/4 x 3	160
6	3/4	3,230	3/8	1 1/2	3 1/8	2	1 1/8	2 1/2	7/8 x 3 1/2	280
7	7/8	4,480	3/8	2	4 1/4	3	1 1/4	2 1/2	1 x 4	390
8	1	5,900	1/2	2	4 1/2	3	1 1/2	3	1 1/8 x 4 1/2	630
9	1 1/8	6,200	1/2	2 1/4	4 3/4	3	1 3/4	3	1 1/4 x 4 1/2	630
10	1 1/4	9,500	5/8	2 1/2	5	3	2	4	1 3/8 x 5	1,021
12	1 1/2	13,800	3/4	3	6 1/2	4	2 1/2	5	1 5/8 x 5 3/4	1,900
14	1 3/4	18,600	3/4	3 3/4	7 3/4	5	2 3/4	5	1 7/8 x 6 7/8	2,425
16	2	24,600	3/4	3 3/4	8 1/4	5	3 1/4	6	2 1/4 x 6 7/8	3,060
18	2 1/4	32,300	3/4	4 1/4	9 1/2	6	3 1/2	6	2 1/2 x 7 3/8	3,688
20	2 1/2	39,800	3/4	4 1/2	9 3/4	6	3 3/4	6	2 3/4 x 7 5/8	3,924
22	2 3/4	49,400	5/8	3 3/4	9 3/4	5 3/4	4	6	3 x 7	4,080
24	3	60,100	5/8	3 3/4	10 1/4	6 1/4	4	7	3 1/4 x 7	4,670