



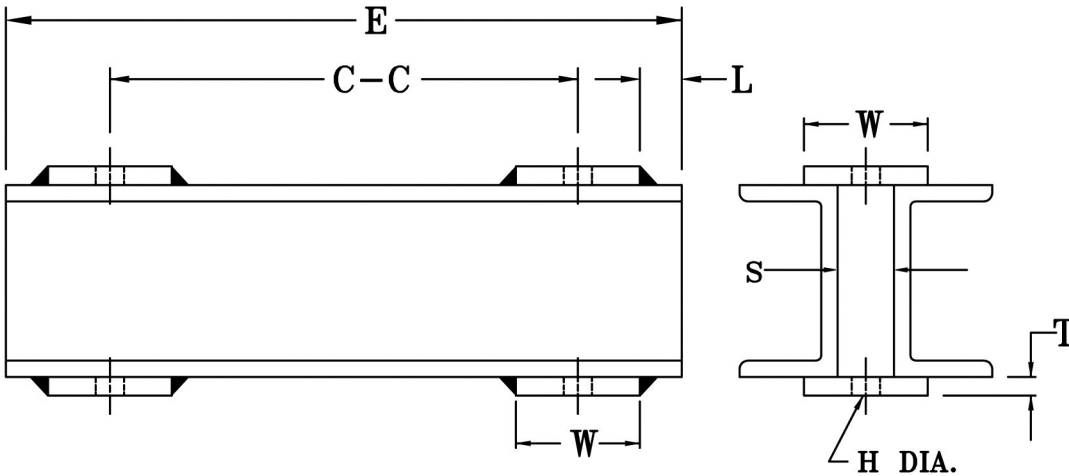
FIG. 75

CHANNEL ASSEMBLY

www.pipingtech.com/fig75

ORDERING: Specify figure number, rod size, channel size, C-to-C and "E" dimension and material required.

$$E = C\text{-to-C} + 2L + W$$



SUPPORT ASSEMBLY COMPONENTS

ROD SIZE	3/8	1/2	5/8	3/4	7/8	1	1 1/8	1 1/4	1 1/2	1 3/4	2	2 1/4	2 1/2	2 3/4	3	3 1/4	3 1/2
H-HOLE	1/2	5/8	3/4	7/8	1	1 1/4	1 3/8	1 1/2	1 3/4	2	2 1/4	2 1/2	2 3/4	3	3 1/4	3 1/2	3 3/4
S	9/16	11/16	13/16	15/16	1 1/16	1 3/8	1 1/2	1 5/8	1 7/8	2 1/4	2 1/2	2 3/4	3	3 1/4	3 1/2	3 3/4	4
W	3	3	3	4	4	4	4	5	5	5	5	6	6	6	6	6	7
T	1/4	1/4	3/8	3/8	1/2	1/2	1/2	1/2	3/4	3/4	3/4	3/4	3/4	3/4	3/4	3/4	3/4
L	1/4	1/4	1/4	1/4	1/4	1/4	1/4	1/4	1/4	1/4	1/4	1/4	1/4	1/4	3/8	3/8	3/8

SAFE LOAD TABLE

NOMINAL SIZE	WEIGHT PER FT. 2C'S	C-TO-C = SPAN IN INCHES														
		12	14	16	18	20	22	24	26	28	30	36	42	48	54	60
MAXIMUM SAFE LOAD IN KIPS																
3	8.2	8.8	7.5	6.6	5.8	5.2	4.8	4.4	3.9	3.6	3.5	2.9	2.5	2.2	1.9	1.7
4	10.8	15.2	13.1	11.4	10.2	9.1	8.3	7.5	7.0	6.5	6.1	5.1	4.3	3.8	3.3	3.0
5	13.4	24.0	20.6	18.0	16.0	14.4	13.1	12.0	11.1	10.3	9.6	8.0	6.8	6.0	5.3	4.8
6	21.0	40.0	34.3	30.0	26.6	24.0	21.8	20.0	18.4	17.1	16.0	13.3	11.4	10.0	8.8	8.0
8	23.0	64.8	55.5	48.6	43.2	38.8	35.3	32.3	29.8	27.7	25.8	21.5	18.5	16.1	14.3	12.9
10	30.6	107.2	91.7	80.3	71.4	64.2	58.4	53.5	49.4	45.8	42.8	35.7	30.6	26.7	23.8	21.4
12	41.4	171.0	147.0	128.0	114.0	103.0	93.4	85.6	79.0	73.3	68.4	57.0	48.9	42.8	38.0	34.2
15	67.8	333.0	286.0	250.0	222.0	200.0	182.0	167.0	154.0	143.0	133.0	111.0	95.3	83.4	74.1	66.7