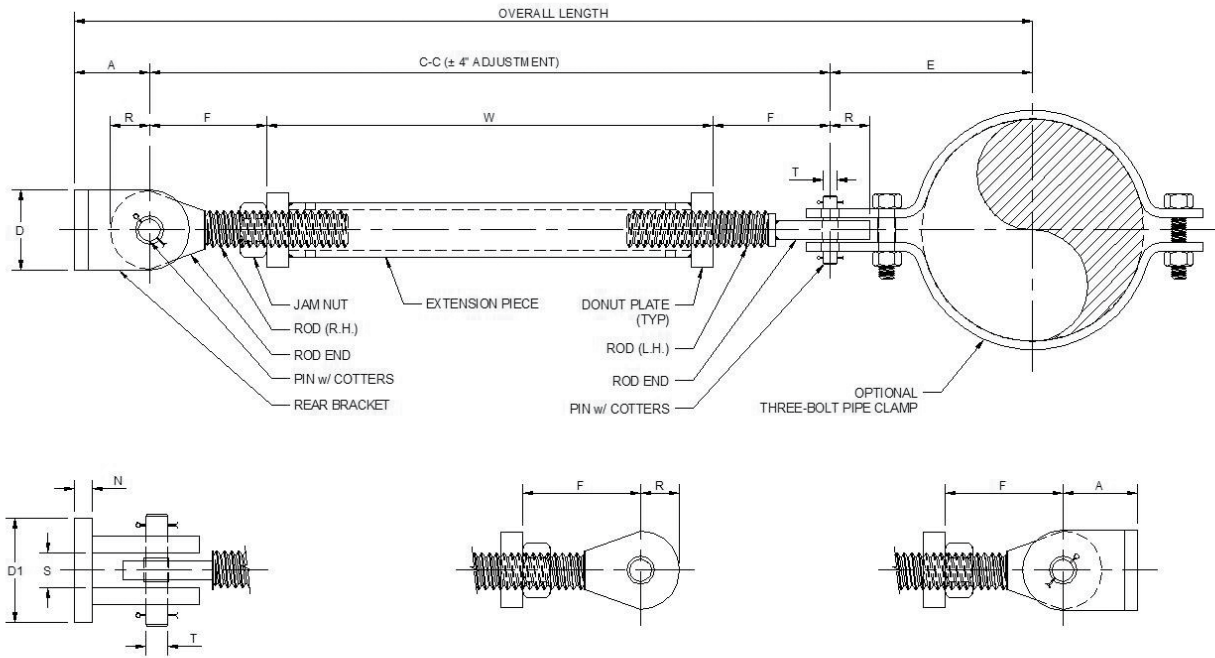




FIG. 2110

SWAY STRUT WITH 4" OF ADJUSTMENT

www.pipingtech.com/fig2110



REAR BRACKET DETAIL

OPTION 1

OPTION 2

ORDERING: Specify figure number, size, type, description, nominal pipe size or special O.D. and C-to-C dimension.

SIZE	LOAD lb.	ROD END	EXT. PIECE PIPE SIZE	A	C - C		W	F	D	D1	N	R	S	T
					MIN.	MAX.								
A	650	3/4	1" SCH.80	1 1/2	18 3/4	60	9 1/2	4 5/8	1 5/8	1 3/4	1/4	1	3/4	0.497 0.495
B	1,500	1	1 1/2" SCH.40	2 3/8	20 1/2	108	10	5 1/4	2 1/4	2 7/8	3/8	1 1/8	1 1/8	0.747 0.745
C	4,500	1	2" SCH.40	2 3/4	20 1/2	120	10	5 1/4	2 1/2	3 3/8	1/2	1 1/2	1 1/8	0.745 0.745
1	8,000	1 1/4	2" SCH.160	3 3/4	24	120	10 1/2	6 3/4	3	4 3/8	3/4	1 3/4	1 3/8	0.997 0.995
2	11,630	1 1/2	2 1/2" SCH.160	3	25	120	11	7	3 1/2	5 3/8	3/4	1 3/4	1 1/2	0.997 0.995
3	15,700	1 3/4	2 1/2" SCH.160	5 5/16	25 1/2	120	11 1/2	7	5 7/16	4 11/16	1	2	1 13/16	1.248 1.246
4	20,700	2	3" SCH.160	5 5/16	29 1/2	120	12	8 3/4	5 7/16	4 11/16	1	2 1/2	1 13/16	1.248 1.246
5	27,200	2 1/4	3" SCH.160	6	32 1/2	120	13	9 3/4	5 9/16	6	1 1/4	2 1/2	2 1/8	1.498 1.496
6	33,500	2 1/2	4" SCH.160	6 3/4	35 1/2	120	13	11 1/4	6 1/8	6 9/16	1 3/4	3	2 3/16	1.748 1.746
7	68,200	3	4" SCH.160	6	38 1/2	120	14	12 1/4	7 1/8	5 3/4	2	3 1/2	2 3/8	1.998 1.996
8	120,000	4	6" SCH.160	7 1/4	41 1/2	120	16	12 3/4	14	8 3/4	2 1/4	4 3/4	2 13/16	2.498 2.496

* Load must not be applied outside a 10° included angle to the pipe clamp axis.