

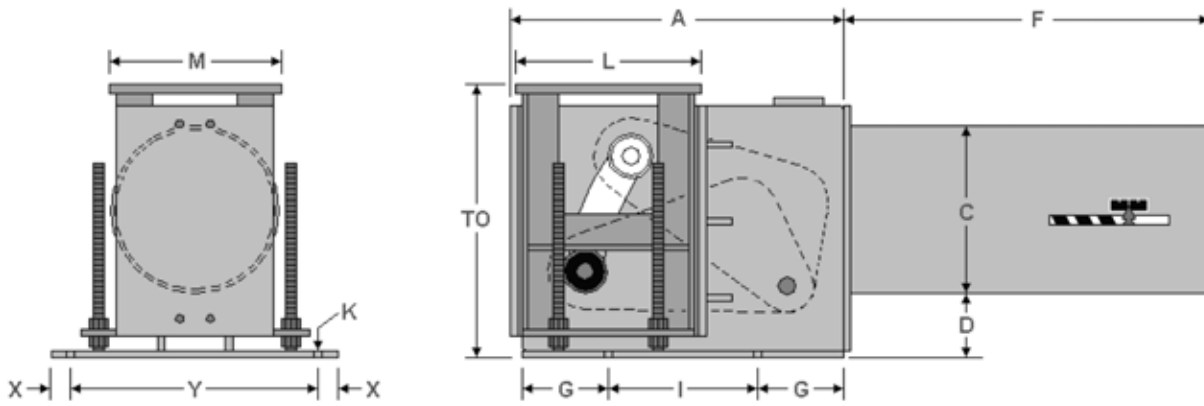


FIG. PTP 200-U

CONSTANT

ENGINEERED PIPE SUPPORTS

www.pipingtech.com/ptp200-u



* Drawing shown for up travel

Figure PTP 200-U is a horizontal constant designed to support piping from below. The base plate is bolted directly to the top of the steel or floor as shown above. This constant supports vertical movement subjected by the total travel and no axial or lateral movement from its load flange unless a slide plate is added.

ORDERING: Specify figure number, size, type, load, actual travel, total travel and direction of travel. For load and travel not in the tables, please call for dimensions.

IMPORTANT NOTES: All dimensions are in inches unless otherwise noted.

- TO - Take out for up travel
- D - Minimum height
- F - Maximum length for the load range
- WT - Maximum weight for the load range

Total Travel 1 1/2 to 4 inches

| LOAD RANGE (lb.) | K_HOLE | TO* | A | C | D | F | G | I | L | M | X | Y | WT (lb.) |
|------------------|--------|----------|----------|--------|---------|----|--------|---------|--------|--------|-------|---------|----------|
| 44 - 243 | 9/16 | 10 1/4 | 13 5/8 | 6 5/8 | 1 3/4 | 12 | 3 1/2 | 6 | 7 1/2 | 7 1/2 | 1 1/2 | 11 3/16 | 100 |
| 244 - 1018 | 11/16 | 13 | 15 1/16 | 8 5/8 | 2 1/4 | 15 | 4 1/4 | 6 | 9 1/2 | 8 1/2 | 1 1/2 | 12 7/16 | 160 |
| 1019 - 3516 | 13/16 | 13 1/2 | 16 | 8 5/8 | 2 3/8 | 22 | 4 7/16 | 6 3/8 | 10 | 11 | 1 1/2 | 16 5/8 | 305 |
| 3517 - 7538 | 15/16 | 15 1/2 | 16 13/16 | 8 5/8 | 3 13/16 | 33 | 5 3/8 | 5 1/4 | 11 3/4 | 11 3/4 | 1 1/2 | 18 1/4 | 485 |
| 7539 - 16159 | 1 1/8 | 18 3/4 | 20 1/4 | 12 3/4 | 3 3/8 | 44 | 6 | 7 1/4 | 14 | 14 | 1 1/2 | 22 | 1,190 |
| 16160 - 31490 | 1 3/8 | 19 13/16 | 21 11/16 | 12 3/4 | 4 3/8 | 58 | 6 | 8 11/16 | 14 | 15 | 1 1/2 | 23 3/8 | 1,720 |

*Take Out (TO) is for up travel [Add 4 inches for down travel]

CONSTANTS_200.XLS-04/22/17

Total Travel 4 1/2 to 6 inches

| LOAD RANGE (lb.) | K_HOLE | TO* | A | C | D | F | G | I | L | M | X | Y | WT (lb.) |
|------------------|--------|--------|----------|--------|---------|----|---------|-------|-------|--------|-------|--------|----------|
| 34 - 183 | 9/16 | 12 1/4 | 17 1/8 | 6 5/8 | 1 15/16 | 12 | 4 | 8 1/2 | 8 1/2 | 7 1/2 | 1 1/2 | 11 1/4 | 120 |
| 184 - 765 | 11/16 | 12 1/2 | 17 5/16 | 8 5/8 | 1 3/8 | 15 | 4 5/16 | 8 1/8 | 9 1/4 | 8 1/4 | 1 1/2 | 12 1/2 | 170 |
| 766 - 2402 | 13/16 | 16 1/2 | 19 | 8 5/8 | 3 11/16 | 22 | 4 15/16 | 8 3/8 | 11 | 11 | 1 1/2 | 16 5/8 | 350 |
| 2403 - 5663 | 15/16 | 17 | 20 5/8 | 8 5/8 | 4 5/16 | 33 | 6 1/4 | 7 1/8 | 14 | 12 1/2 | 1 1/2 | 18 1/8 | 540 |
| 5664 - 12140 | 1 1/8 | 20 | 23 15/16 | 12 3/4 | 3 11/16 | 44 | 7 1/4 | 8 1/2 | 16 | 14 | 1 1/2 | 22 | 1,290 |
| 12141 - 23659 | 1 3/8 | 20 | 24 15/16 | 12 3/4 | 4 11/16 | 58 | 7 1/16 | 9 7/8 | 16 | 15 | 1 1/2 | 22 3/8 | 1,795 |

*Take Out (TO) is for up travel [Add 6 inches for down travel]

CONSTANTS_200.XLS-04/22/17



FIG. PTP 200-U

CONSTANT

www.pipingtech.com/ptp200-u

ENGINEERED PIPE SUPPORTS

Total Travel 6 1/2 to 8 inches

| LOAD RANGE (lb.) | K_HOLE | TO* | A | C | D | F | G | I | L | M | X | Y | WT (lb.) |
|------------------|--------|--------|---------|--------|--------|----|-------|--------|----|--------|-------|---------|----------|
| 25 - 151 | 9/16 | 17 1/8 | 20 3/16 | 6 5/8 | 5 | 12 | 4 3/4 | 10 3/8 | 11 | 8 1/2 | 1 1/2 | 11 7/16 | 155 |
| 152 - 632 | 11/16 | 17 | 21 | 8 5/8 | 3 5/16 | 15 | 5 | 10 3/8 | 11 | 8 1/2 | 1 1/2 | 12 7/16 | 205 |
| 633 - 1985 | 13/16 | 18 1/2 | 22 1/4 | 8 5/8 | 3 1/2 | 22 | 5 1/2 | 10 1/2 | 12 | 10 3/4 | 1 1/2 | 16 5/8 | 390 |
| 1986 - 4680 | 15/16 | 19 | 23 1/4 | 8 5/8 | 5 1/16 | 33 | 6 | 10 3/8 | 13 | 12 | 1 1/2 | 18 1/8 | 595 |
| 4681 - 10033 | 1 1/8 | 21 1/2 | 26 7/16 | 12 3/4 | 4 7/8 | 44 | 7 1/4 | 11 | 16 | 14 | 1 1/2 | 22 | 1,320 |
| 10034 - 19552 | 1 3/8 | 22 1/2 | 28 | 12 3/4 | 4 7/8 | 58 | 7 1/2 | 12 | 17 | 16 | 1 1/2 | 22 7/8 | 1,895 |

*Take Out (TO) is for up travel [Add 8 inches for down travel]

CONSTANTS_200.XLS-11/02/17

Total Travel 8 1/2 to 10 inches

| LOAD RANGE (lb.) | K_HOLE | TO* | A | C | D | F | G | I | L | M | X | Y | WT (lb.) |
|------------------|--------|--------|--------|--------|-------|----|-------|--------|--------|--------|-------|--------|----------|
| 25 - 125 | 9/16 | 19 1/8 | 23 5/8 | 6 5/8 | 4 1/2 | 12 | 5 3/8 | 12 1/4 | 11 | 7 1/2 | 1 1/2 | 12 | 175 |
| 126 - 522 | 11/16 | 19 1/8 | 23 5/8 | 8 5/8 | 3 1/2 | 15 | 5 3/4 | 11 1/2 | 11 3/4 | 8 1/2 | 1 1/2 | 12 1/2 | 225 |
| 523 - 1640 | 13/16 | 20 1/8 | 24 5/8 | 8 5/8 | 3 5/8 | 22 | 6 1/8 | 11 5/8 | 12 3/4 | 10 3/4 | 1 1/2 | 16 5/8 | 420 |
| 1641 - 3868 | 15/16 | 21 1/8 | 26 1/4 | 8 5/8 | 5 3/8 | 33 | 6 5/8 | 12 | 13 3/4 | 12 | 1 1/2 | 18 1/8 | 650 |
| 3869 - 8292 | 1 1/8 | 25 | 29 3/4 | 12 3/4 | 7 1/2 | 44 | 8 3/8 | 11 3/4 | 17 | 14 | 1 1/2 | 22 | 1,445 |
| 8293 - 16159 | 1 3/8 | 26 7/8 | 31 3/4 | 12 3/4 | 8 3/8 | 58 | 8 1/2 | 13 1/2 | 18 | 16 | 1 1/2 | 22 7/8 | 2,010 |

*Take Out (TO) is for up travel [Add 10 inches for down travel]

CONSTANTS_200.XLS-11/02/17

Total Travel 10 1/2 to 12 inches

| LOAD RANGE (lb.) | K_HOLE | TO* | A | C | D | F | G | I | L | M | X | Y | WT (lb.) |
|------------------|--------|--------|--------|--------|-------|----|-------|--------|--------|--------|-------|--------|----------|
| 17 - 103 | 9/16 | 22 1/8 | 27 1/4 | 6 5/8 | 4 1/2 | 12 | 6 | 14 1/2 | 12 3/4 | 7 3/4 | 1 1/2 | 12 1/2 | 220 |
| 104 - 432 | 11/16 | 22 1/8 | 27 3/4 | 8 5/8 | 3 1/2 | 15 | 6 1/2 | 14 | 13 3/4 | 8 3/4 | 1 1/2 | 14 | 275 |
| 433 - 1491 | 13/16 | 22 5/8 | 27 3/4 | 8 5/8 | 3 5/8 | 22 | 6 1/2 | 14 | 13 3/4 | 10 3/4 | 1 1/2 | 16 5/8 | 475 |
| 1492 - 3197 | 15/16 | 25 1/8 | 29 3/8 | 8 5/8 | 7 1/2 | 33 | 7 | 14 1/2 | 15 | 12 | 1 1/2 | 18 1/8 | 735 |
| 3198 - 6853 | 1 1/8 | 25 3/8 | 31 3/4 | 12 3/4 | 5 7/8 | 44 | 8 1/4 | 14 1/4 | 17 | 14 | 1 1/2 | 22 | 1,485 |
| 6854 - 13354 | 1 3/8 | 26 7/8 | 33 5/8 | 12 3/4 | 7 1/8 | 58 | 8 1/2 | 15 1/2 | 18 | 16 | 1 1/2 | 22 7/8 | 2,045 |

*Take Out (TO) is for up travel [Add 12 inches for down travel]

CONSTANTS_200.XLS-04/22/17

Total Travel 12 1/2 to 14 inches

| LOAD RANGE (lb.) | K_HOLE | TO* | A | C | D | F | G | I | L | M | X | Y | WT (lb.) |
|------------------|--------|--------|--------|--------|-------|----|-------|--------|--------|--------|-------|--------|----------|
| 17 - 94 | 9/16 | 25 1/8 | 29 5/8 | 6 5/8 | 5 3/8 | 12 | 6 1/8 | 16 3/4 | 12 3/4 | 7 3/4 | 1 1/2 | 12 1/2 | 250 |
| 95 - 392 | 11/16 | 25 1/8 | 30 1/8 | 8 5/8 | 4 3/8 | 15 | 6 5/8 | 16 1/4 | 13 3/4 | 8 3/4 | 1 1/2 | 14 | 305 |
| 393 - 1232 | 13/16 | 25 1/2 | 31 | 8 5/8 | 4 1/2 | 22 | 7 | 16 | 14 1/2 | 10 3/4 | 1 1/2 | 16 5/8 | 530 |
| 1233 - 2906 | 15/16 | 26 1/2 | 32 5/8 | 8 5/8 | 6 7/8 | 33 | 8 1/4 | 15 1/4 | 17 | 12 | 1 1/2 | 18 1/8 | 800 |
| 2907 - 6230 | 1 1/8 | 28 | 34 1/4 | 12 3/4 | 6 3/8 | 44 | 8 5/8 | 15 3/4 | 18 | 14 | 1 1/2 | 22 | 1,570 |
| 6231 - 12140 | 1 3/8 | 29 | 36 3/4 | 12 3/4 | 7 3/8 | 58 | 9 | 17 1/2 | 19 | 16 | 1 1/2 | 22 7/8 | 2,160 |

*Take Out (TO) is for up travel [Add 14 inches for down travel]

CONSTANTS_200.XLS-11/02/17